



EX

LIBRIS.

PHILIP
GOSSE.

Philip Gosse
& Weppons

0.15
2/9

P.H. GOSSE.

[Faint handwritten notes and numbers, possibly a list or index]

332 pages

011901

LIBRARY
NATIONAL MUSEUM

Canadian Museum of Nature

1945

London

England

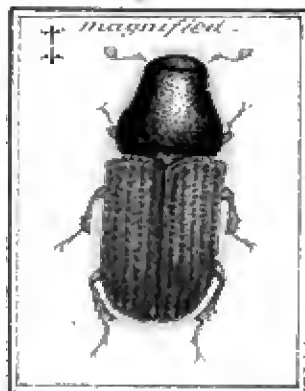
Pa,

la

1. *Monochamus Resutor*
2. *Cimbex Americana*



Ischaerus



Ischaerus

Ischaerus



gryllus

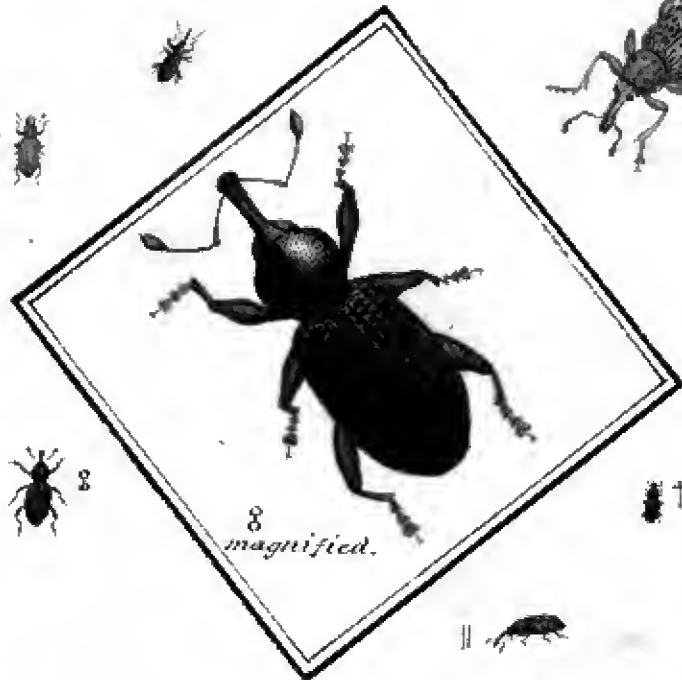


gryllus



*Leptura
4 of 100.*





1000



Table

Number

Content

Name

1844



Mordella?



Cantharis



Stenocryptus ruficornis



Handwritten text, possibly a signature or name, located below the insect.

Callidium (Agroste)



Stromatium



Merisus



Pachysia



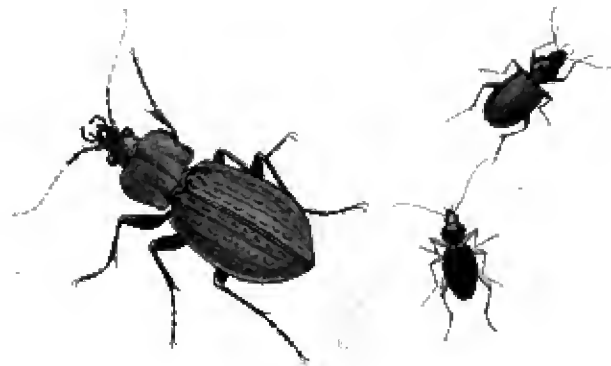




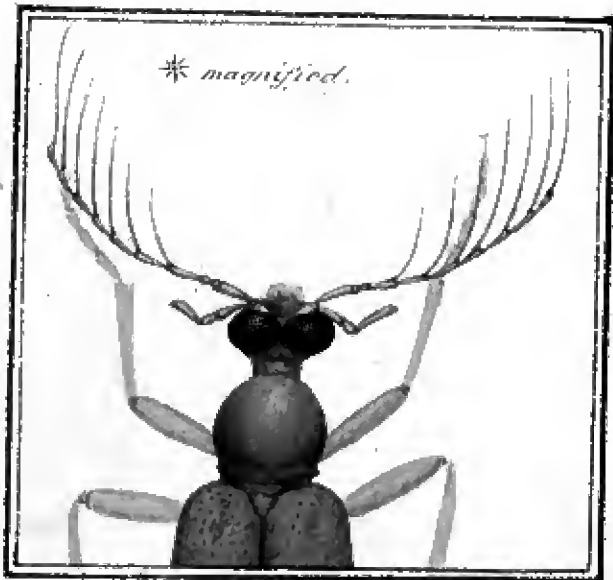
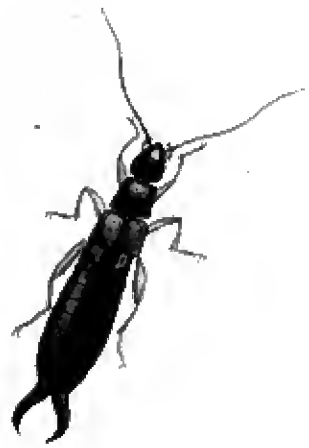
Colonus



Colonus



Carabus
lucicola



Pogonocera (Carpocollis)



Tettigonia
viridissima



Hem

Notonecta

at 1/2 hour



Spina

Spina





*Black Swallowtail and Alexis Butterflies,
of Newfoundland.*

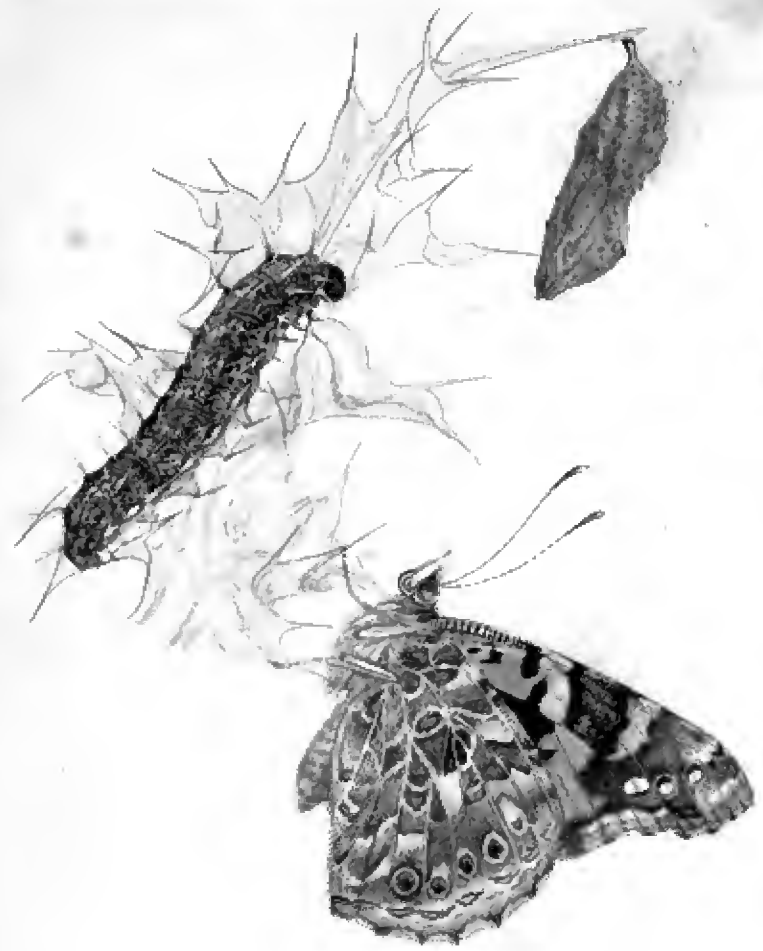
P. Braccanda Scam. Luc.
1848.



1834









Chionobas



Pleurostictus, Summer form Acadica B.
W.H.B.

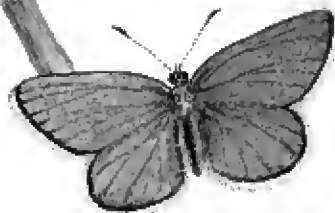


Chionobas calais, Scudder
W.H.B.



Cotonymixis inornata, Edwards
W.H.B.

Chrysophanus Epiny on the Boisduval
 not to



Lyc. Aster Edwards. 1882
 not to

July 30 1882

Lyc. Couperi Grote
 not to



Lyc. Aquilo Bois.
 not to



Common!

July 30 1882

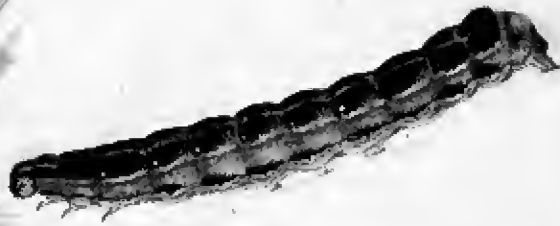
Sphinx



U. ...
...



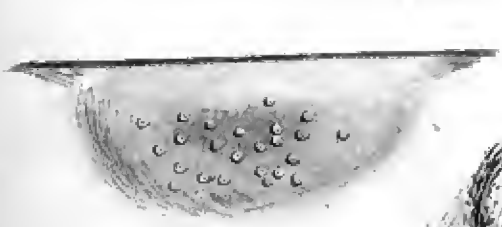
...







Agrotis

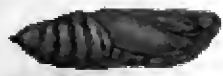


Agrotis



Agrotis

Scaligeria





*Hesperia
argentea?*



Graphisoma



Hesperia

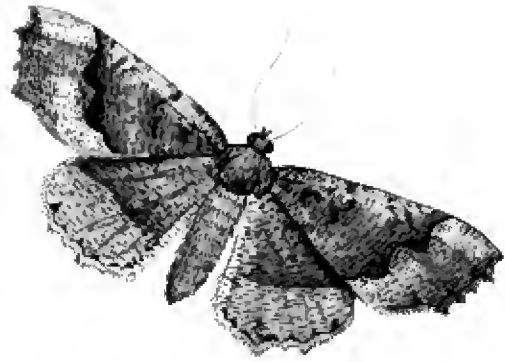


Hesperia



Hesperia





Handwritten text, possibly a species name or collector's mark, located below the first moth illustration.



Handwritten text, possibly a species name or collector's mark, located below the second moth illustration.



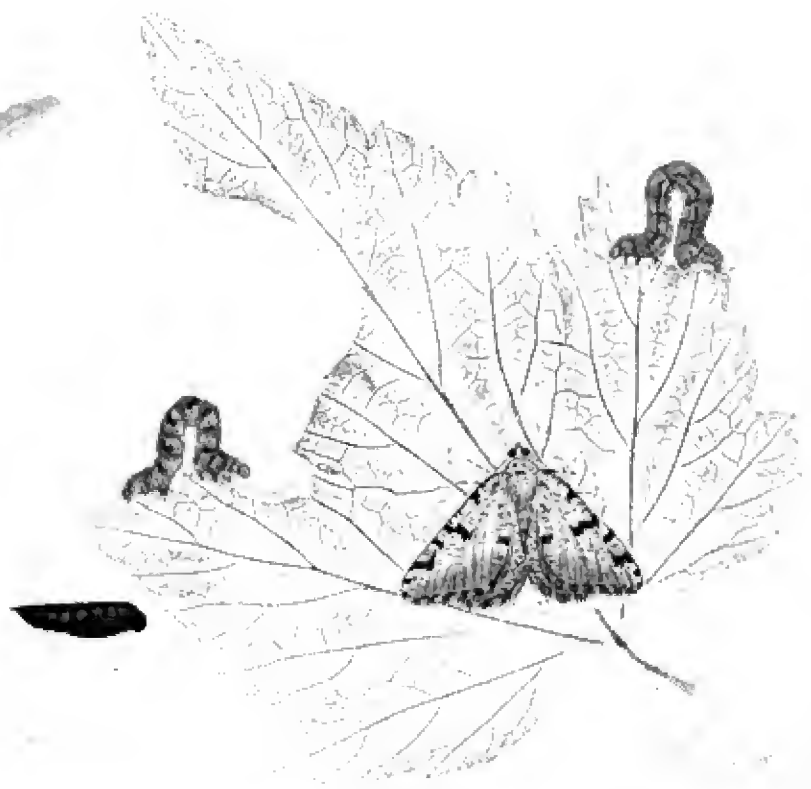
Handwritten text, possibly a species name or collector's mark, located below the third moth illustration.



Handwritten text, possibly a species name or collector's mark, located below the fourth moth illustration.



7-9-11





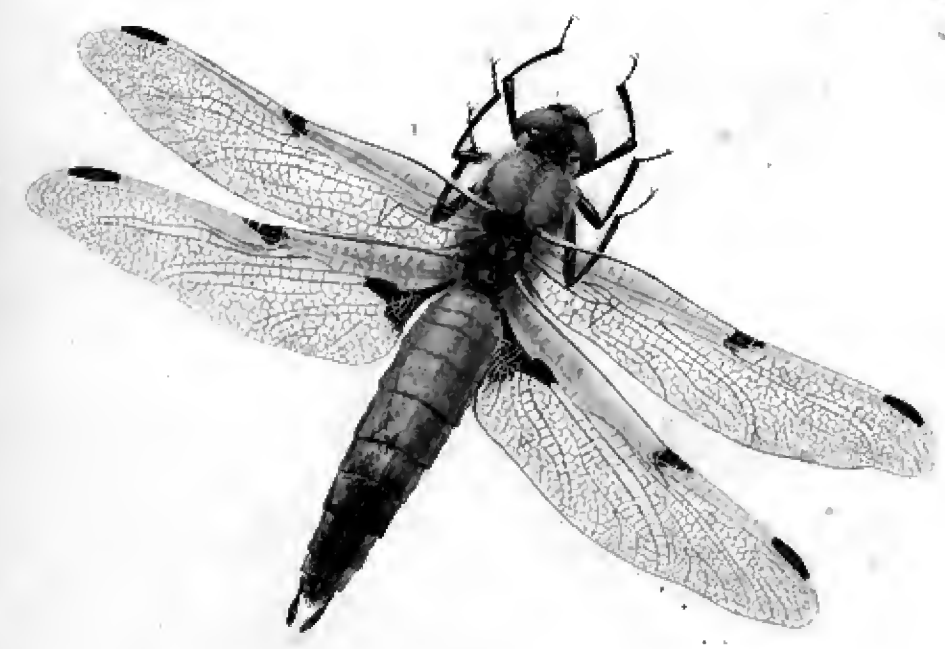
Platystrophia ()

27

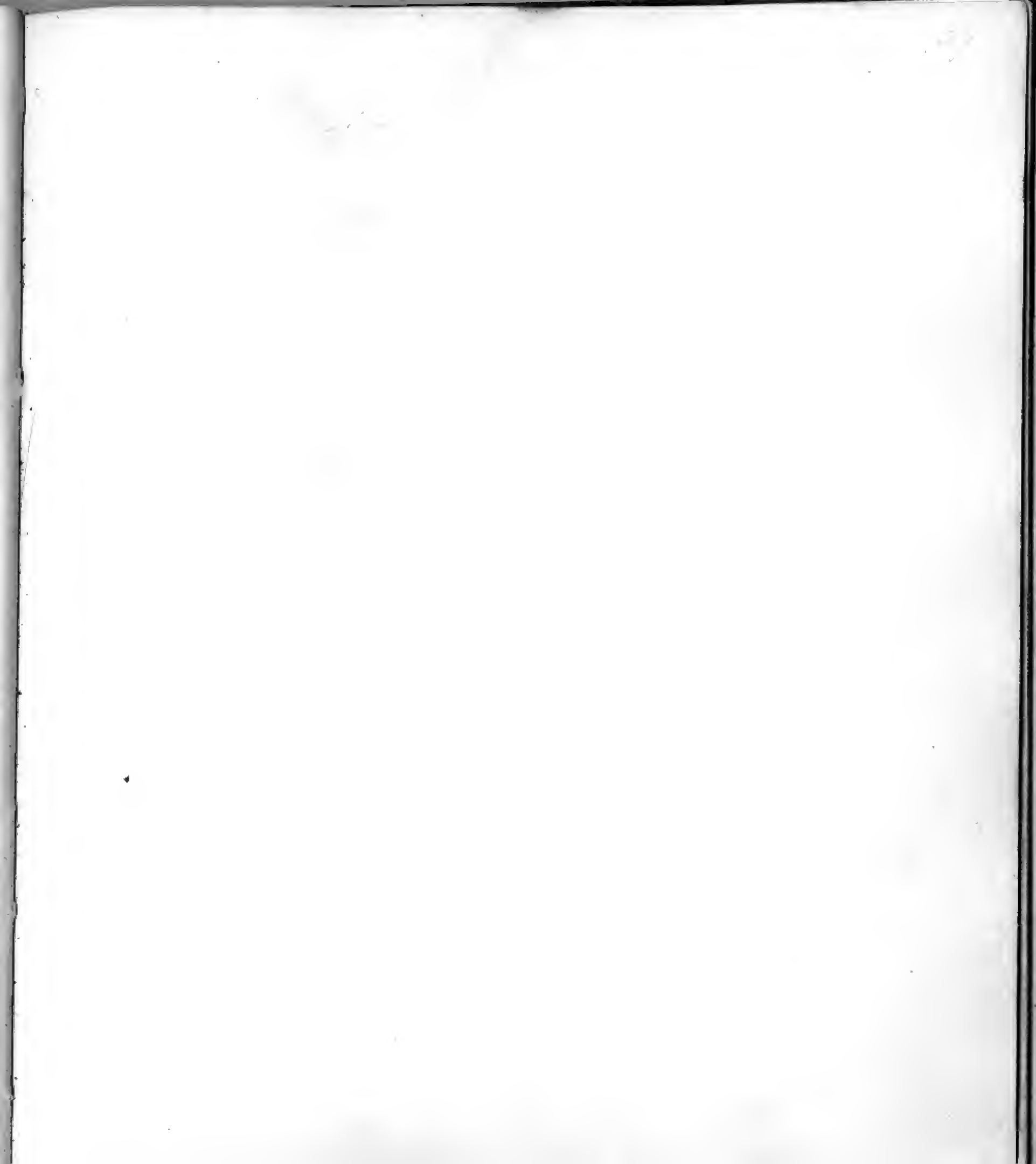




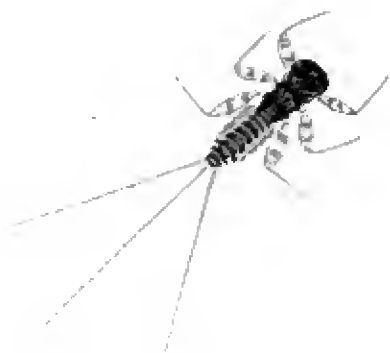
LIBRARY
NATIONAL MUSEUM

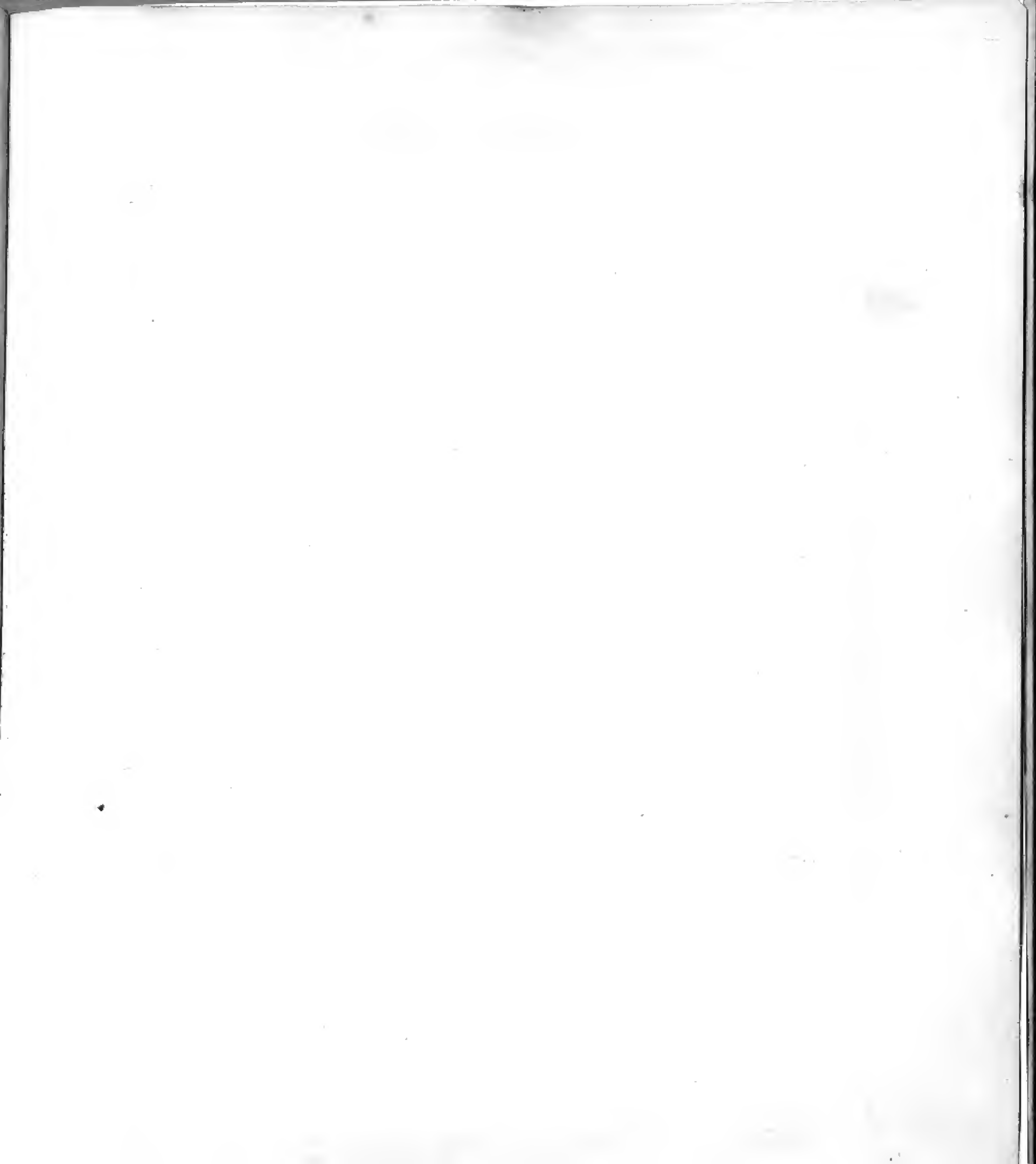


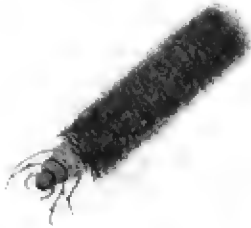








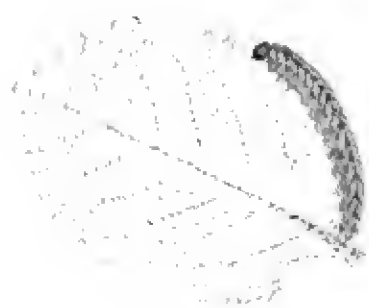








Found at Bay Roberts. Sept 19. 1836. W.G.



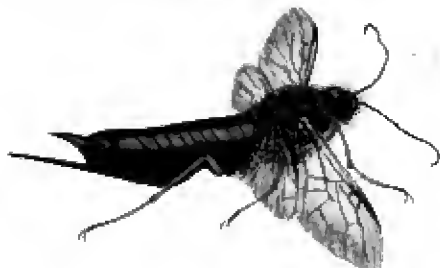
M. ...



M. ...



M. ...

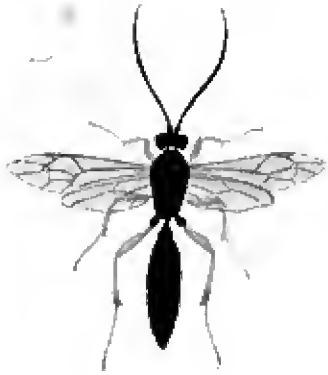


M. ...

M. ...



M. ...





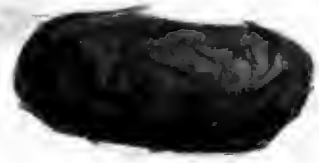
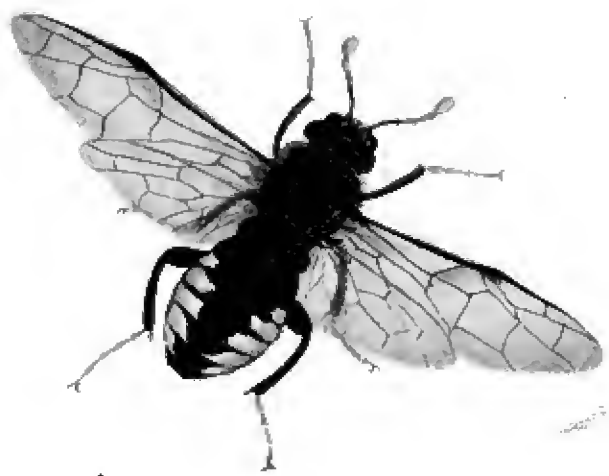


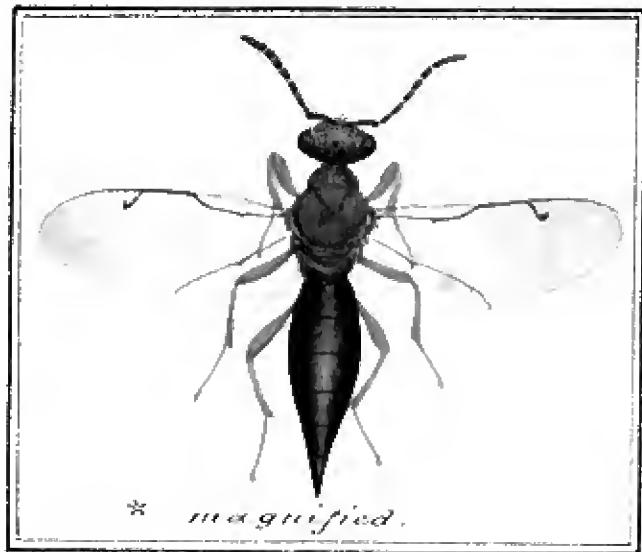
P. maculipes



P. maculipes
1875







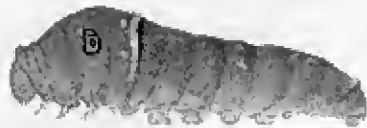
* magnified.





Limnephila

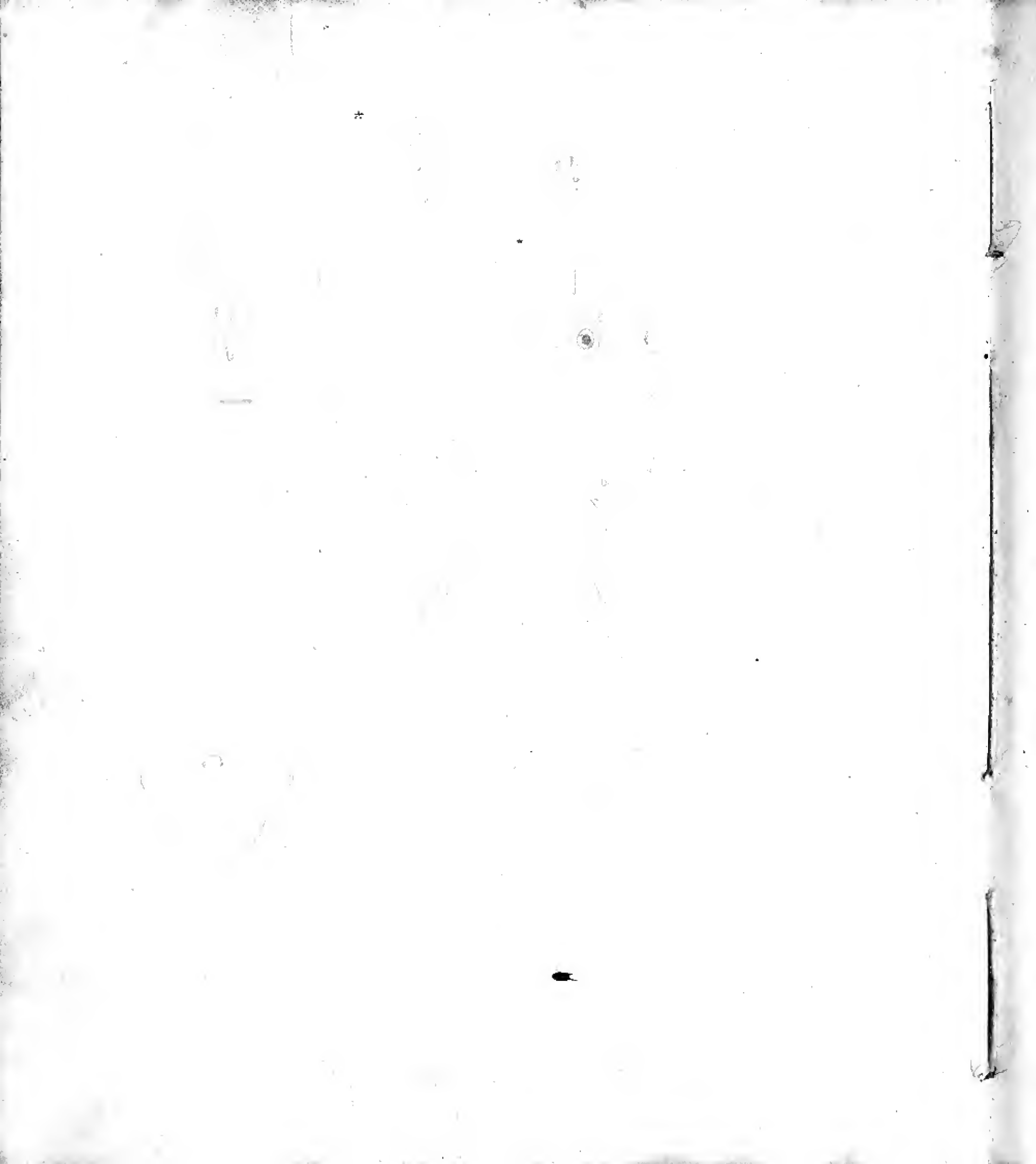








1877



... ..
... ..
... ..

... ..
... ..
... ..

... ..
... ..
... ..

... ..
... ..
... ..

... ..
... ..
... ..

... ..
... ..
... ..

[Faint, illegible handwritten text, possibly bleed-through from the reverse side of the page]

... ..

... ..

... ..

... ..

... ..



Handwritten text, possibly a species name or description, mostly illegible.

Handwritten text, possibly a species name or description, mostly illegible.